

Power Splitter/Combiner

EDF0246-A008938

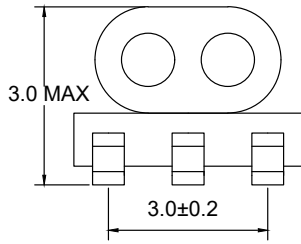
2024-11-12 Rev. 0



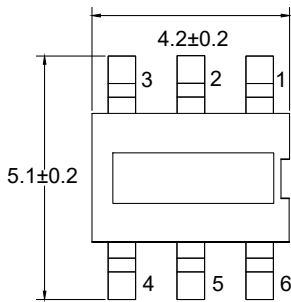
50Ω 2 Way-0° Power Divider

6-2500MHz

Outline Drawing(mm)



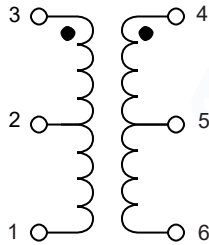
Side View



Top View

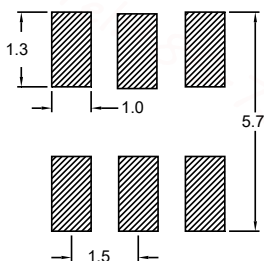
Electrical structure

Fig F



Bottom view

Recommended layout(mm)



Pin Connections

INPUT	1
OUTPUT 1	4
OUTPUT 2	6
Ground	3
External 1.0 pF Capacitor	2,5

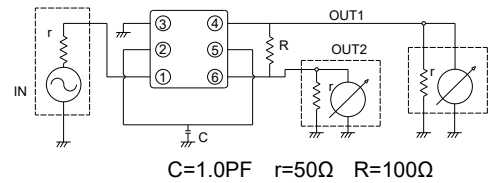
Features

- Input Power: 0.25W Max
- DC Current: 30mA Max
- 260°C Reflow Compatible
- RoHS compliant and lead free
- Operating temperature range: -40°C to +85°C
- Storage temperature range: -55°C to +100°C

Applications

- For Motorola Walkie-talkie.
- For Car Streaming Media Rearview Mirror.
- For Broadband and Wireless Communications.
- For Wireless Microphone & Marine Communications.
- For Ideally Suited LTE, Cellular, UMTS, WiFi, WiMAX.
- For Differential Modulator/demodulator and Active Mixers.

Electrical schematic

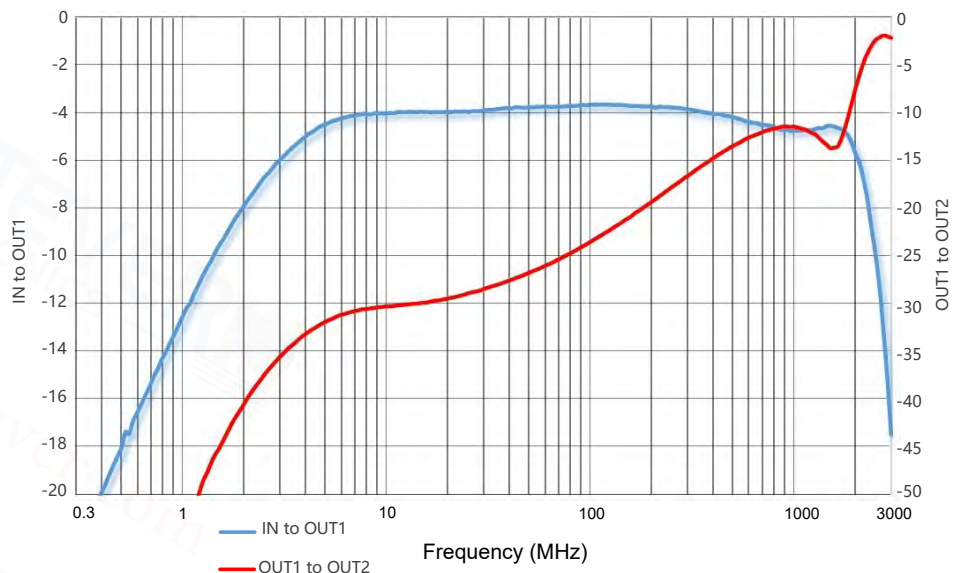


C=1.0PF r=50Ω R=100Ω

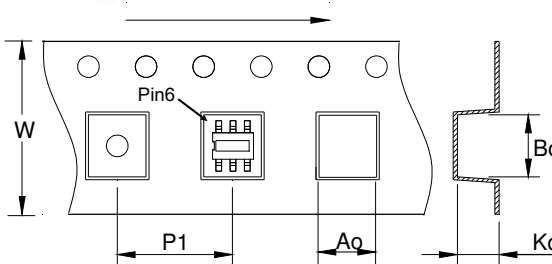
Bottom view

Electrical Specifications: TA=25°C, 0dBm, Z0=50Ω

Item	Subject	Specifications(A)	Specifications(B)	Note
Insertion Loss OUT1 to OUT2	6-100MHz	18dB min	Initial ± 2.0dB	SPEC A is Initial valuc.
	300MHz	12dB min	Initial ± 2.0dB	
	1000MHz	6dB min	Initial ± 2.0dB	
Insertion Loss IN to OUT1	6MHz	5.0±2.0dB	Initial ± 2.0dB	SPEC B is permissible value or changes after environmental test.
	10-300MHz	4.0±2.0dB	Initial ± 2.0dB	
	1000MHz	6.0±2.5dB	Initial ± 2.0dB	
	2000MHz	5.5±3.0dB	Initial ± 3.0dB	
	2500MHz	8.0±4.0dB	Initial ± 3.0dB	



Carrier Tape Orientation



Tape & Reel Information

Parameter	Units	Value
Qty per reel	PCS	2000
Reel Size	mm	330
Tape Width	mm	12.00
Pitch	mm	8.00
Ao	mm	4.50
Bo	mm	5.70
Ko	mm	3.60