

# Power Splitter/Combiner

## EDD0245-G009002

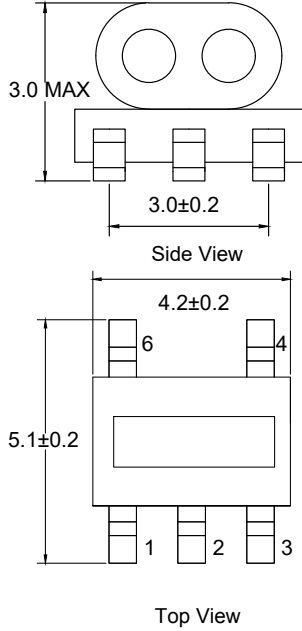
2024-11-12 Rev. 0



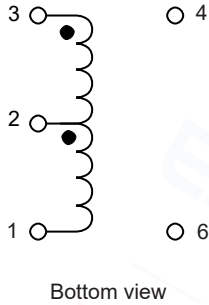
50Ω 2 Way-0° Power Divider

10-1000 MHz

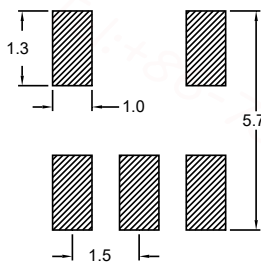
### Outline Drawing(mm)



### Electrical structure



### Recommended layout(mm)



### Pin Connections

Input	2
Output 1	1
Output 2	3
Not Connected	4,6

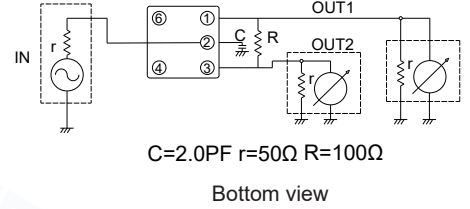
### Features

- RF Power, 0.25W MAX
- DC Current, 30mA MAX
- Operating temperature range: -40°C to +85°C
- Storage temperature range: -55°C to +100°C
- 260°C Reflow Compatible
- RoHS compliant and lead free

### Applications

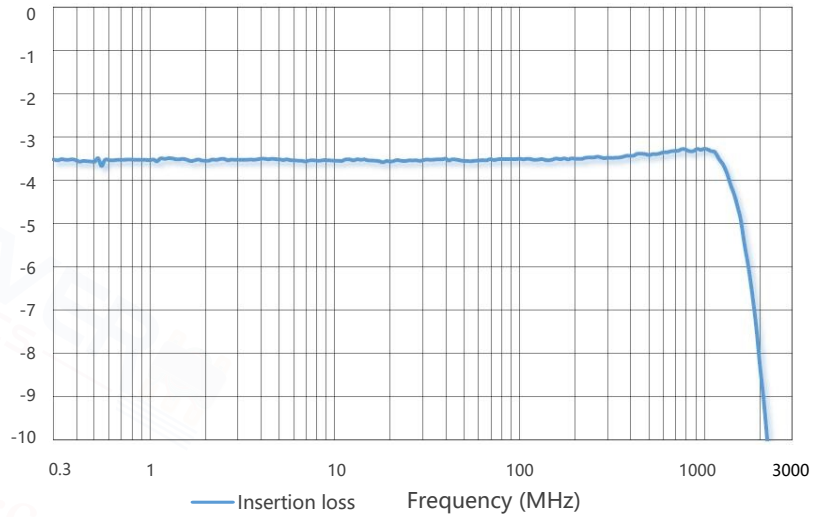
- For Motorola Walkie-talkie.
- For Car Streaming Media Rearview Mirror.
- For Broadband and Wireless Communications.
- For Wireless Microphone & Marine Communications.
- For Ideally Suited LTE, Cellular, UMTS, WiFi, WiMAX.
- For Differential Modulator/demodulator and Active Mixers.

### Electrical schematic

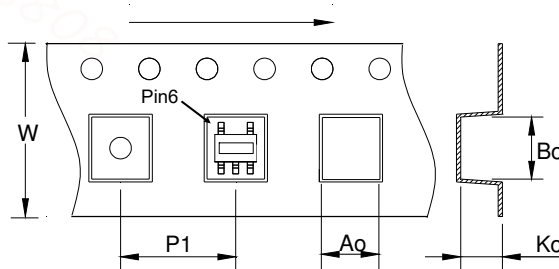


### Electrical Specifications:TA=25°C, 0dBm, Z0=50Ω

Item	Subject	Specifications(A)	Specifications(B)	Note
Insertion Loss	10MHz	3.5 ± 2.0dB	Initial ± 2.0dB	SPEC A is Initial valuc.
	50MHz	3.5 ± 2.0dB	Initial ± 2.0dB	
	100MHz	3.5 ± 2.0dB	Initial ± 2.0dB	SPEC B is permissible value or changes after environmental test.
	500MHz	3.5 ± 2.0dB	Initial ± 2.0dB	
	1000MHz	3.5 ± 2.0dB	Initial ± 2.0dB	



### Carrier Tape Orientation



### Tape & Reel Information

Parameter	Units	Value
Qty per reel	PCS	2000
Reel Size	mm	330
Tape Width	mm	12.00
Pitch	mm	8.00
Ao	mm	4.50
Bo	mm	5.70
Ko	mm	3.60