

Power Splitter/Combiner

EDD0026-F015441

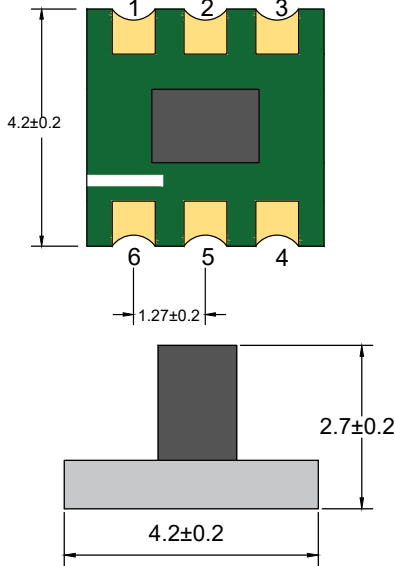
2020-05-27 Rev. 0



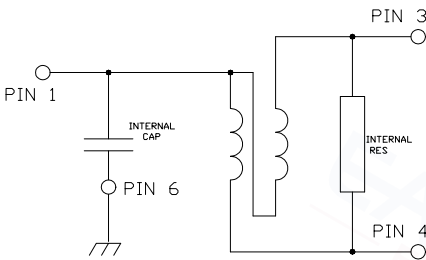
75Ω 2 Way-0° Power Divider

5-2400MHz

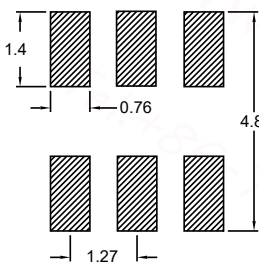
Outline Drawing(mm)



Electrical structure



Recommended layout(mm)



Pin Connections

SUM PORT	1
PORT 1	3
PORT 2	4
GROUND	6

Features

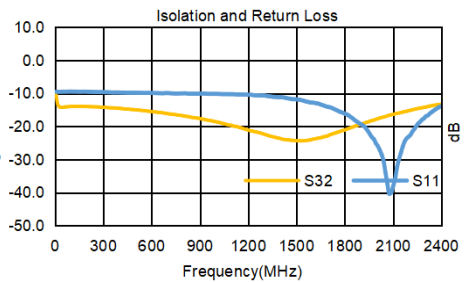
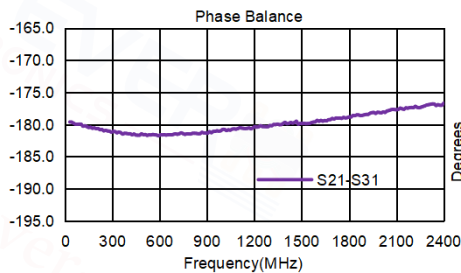
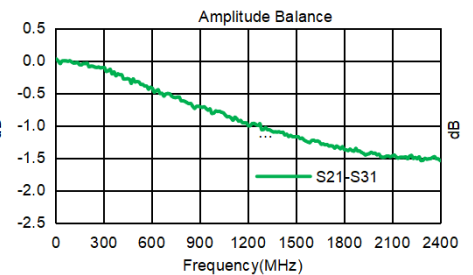
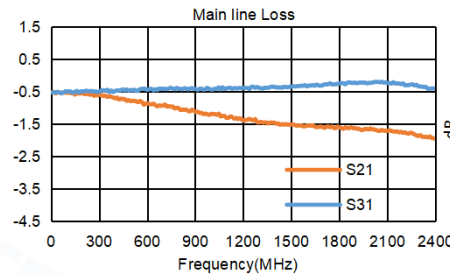
- RF power: 0.50W
- DC current: 100mA
- 260°C Reflow Compatible
- RoHS compliant and lead free
- Operating temperature range: -40 °C to +85 °C
- Storage temperature range: -55 °C to +100 °C

Applications

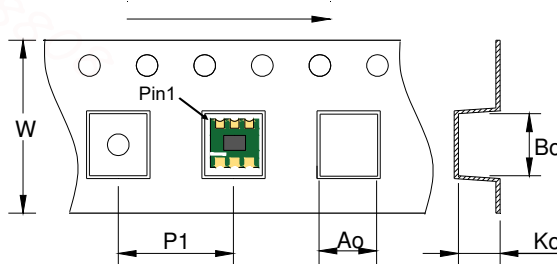
For Docsis 3.0 & 3.1 Cable Modem.
 For Wideband Push-pull Amplifiers.
 For CATV Amplifiers Module & Set top box.
 For CATV Optical Receivers and Amplifiers.
 For VHF/UHF Transmitters and Push-pull Amplifiers.

Electrical Specifications:TA=25 °C, 0dBm, Z0=75Ω

Parameter	Test Conditions	Units	Min	Typ	Max
Main line Loss (Pin1-3)	5-2400MHz	dB	—	2.0	3.0
Main line Loss (Pin1-4)	5-2400MHz	dB	—	0.5	1.5
Input Return Loss	5-2400MHz	dB	8.0	10.0	—
Amplitude Unbalance	5-2400MHz	dB	—	1.5	2.5
Phase Unbalance	5-2400MHz	dB	—	5.0	15.0
Isolation	5-2400MHz	dB	10.0	14.0	—



Carrier Tape Orientation



Tape & Reel Information

Parameter	Units	Value
Qty per reel	PCS	2000
Reel Size	mm	330
Tape Width	mm	12.00
Pitch	mm	8.00
Ao	mm	4.80
Bo	mm	5.10
Ko	mm	3.60