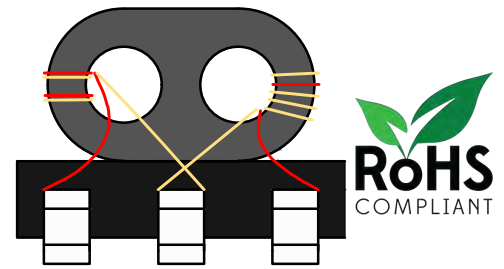


Power Splitter/Combiner

B008-617DS-6725-B026

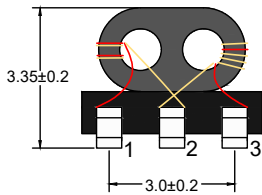
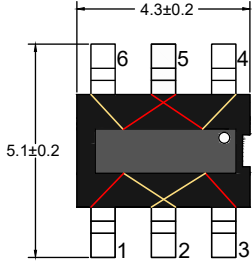
2020-04-16 Rev. 0



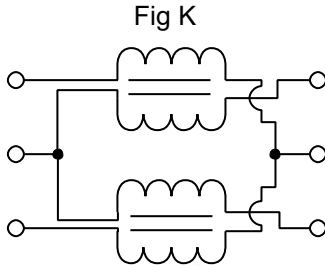
75Ω 2 Way-0° Power Divider

5-1250MHz

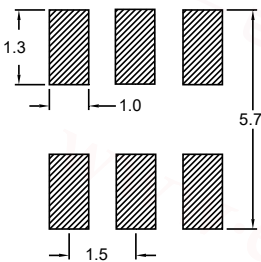
Outline Drawing(mm)



Electrical structure



Recommended layout(mm)



Pin Connections

SUM PORT	3
PORT 1	1
PORT 2	6
GROUND	4
External 1.5 pF Capacitor GROUND	2, 5

Features

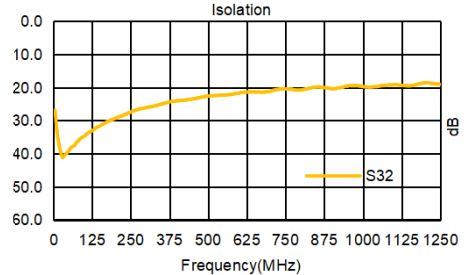
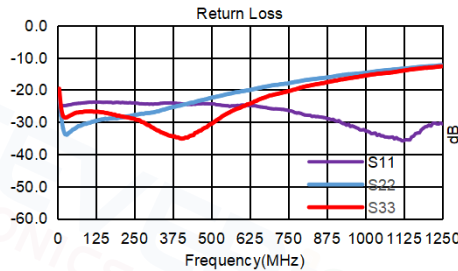
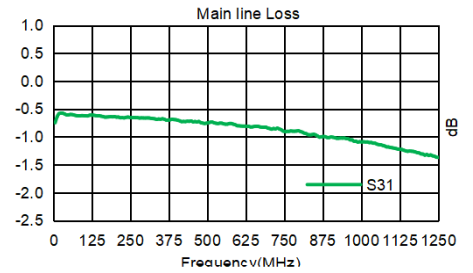
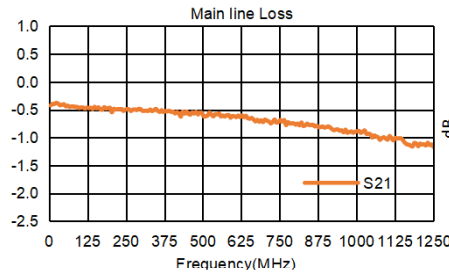
- Operating temperature range: -40°C to +85°C
- Storage temperature range: -55°C to +100°C

Applications

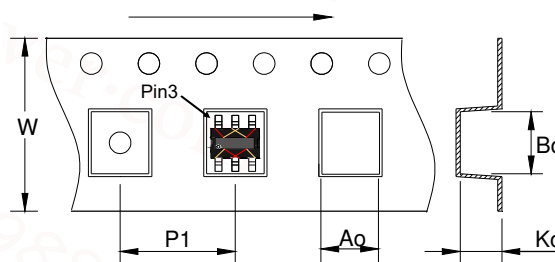
- For catv
- For broadband and wireless communications

Electrical Specifications: TA=25°C, 0dBm, Z0=75Ω

Parameter	Test Conditions	Units	Min	Typ	Max
Main line Loss (Pin3-1)	5-1250MHz	dB	—	1.0	2.0
Main line Loss (Pin3-6)	5-1250MHz	dB	—	1.2	2.5
Input Return Loss	5-1250MHz	dB	10.0	20.0	—
Output Return Loss 1	5-1250MHz	dB	10.0	16.0	—
Output Return Loss 2	5-1250MHz	dB	10.0	16.0	—
Isolation	5-1250MHz	dB	16.0	20.0	—



Carrier Tape Orientation



Tape & Reel Information

Parameter	Units	Value
Qty per reel	PCS	2000
Reel Size	mm	330
Tape Width	mm	12.00
Pitch	mm	8.00
Ao	mm	4.50
Bo	mm	5.30
Ko	mm	3.60